

FAB-HOMES™ – PROSPECT

PASSIVE ECO HOME – CONTEMPORARY, OPEN AND SPACIOUS



FAB-HOMES





Garden View Prospect



Entrance View



Enjoy your smart green house

FAB-HOMES™ – PROSPECT

PASSIVE ECO HOME – CONTEMPORARY, OPEN AND SPACIOUS

MODEL PROSPECT – OVERVIEW

The Prospect's orientation is ideal on a site with panoramic views or garden-yard environments as it focuses views toward the landscape - bringing the outside in. This two storey Passive House features three bedrooms plus flex-room, indoor-outdoor living, lots of natural light, extra high ceilings and a small footprint. At your choice, you could add a Green Roof, Renewable energy Sources such as Photovoltaic Panels or Solar Hot Water on the roof. For heating and cooling we primarily recommend a highly efficient heat recovery ventilation system and add additional components depending on your location and climate.

PACKAGE PROSPECT

PURCHASE High Quality Construction documents planned along Passive Design principles:

Includes: Plan summary with area calculations, Foundation Plan, Floorplans, Roof plan, Elevations/Sections, Connection details, Window schedule, Building license.

Optional (not included): Custom plan changes, Siteplan with FSR/GFA calculations, Passive House Energy Modelling (PHPP), Multiple building license.

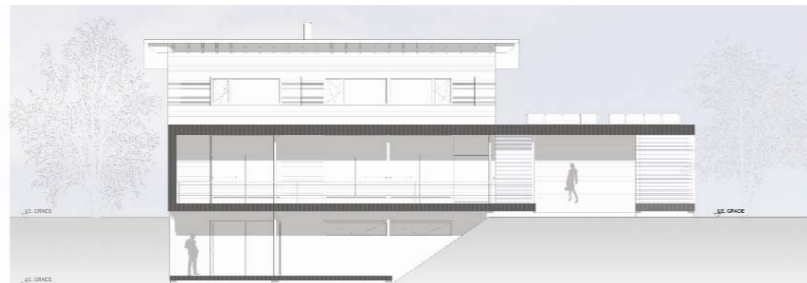
Please contact us for details and pricing: **E-Mail:** info@fab-homes.com

FACTS PROSPECT

PROSPECT		
Stories: 2	Square Foot: 1750	Footprint: 36 x 45
Bedrooms: 3+	Bathrooms: 2	Carport: No (Extra)
Basement Option: Yes (Extra)		

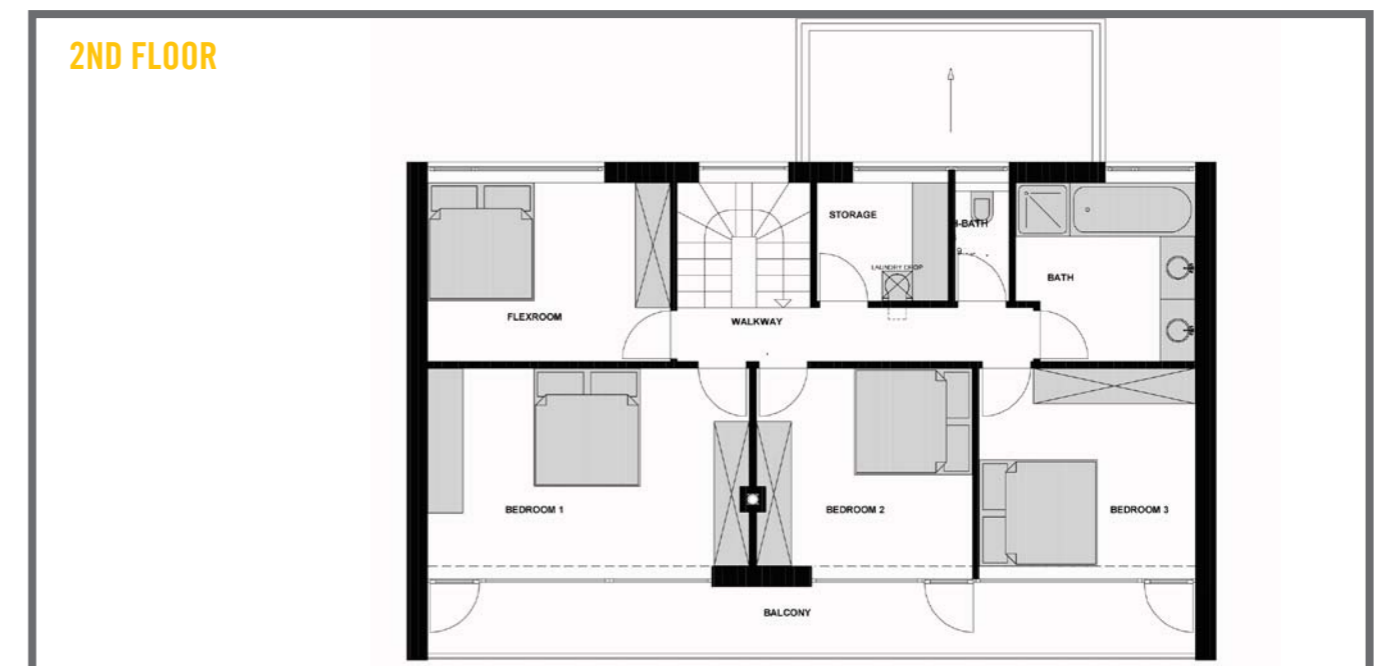
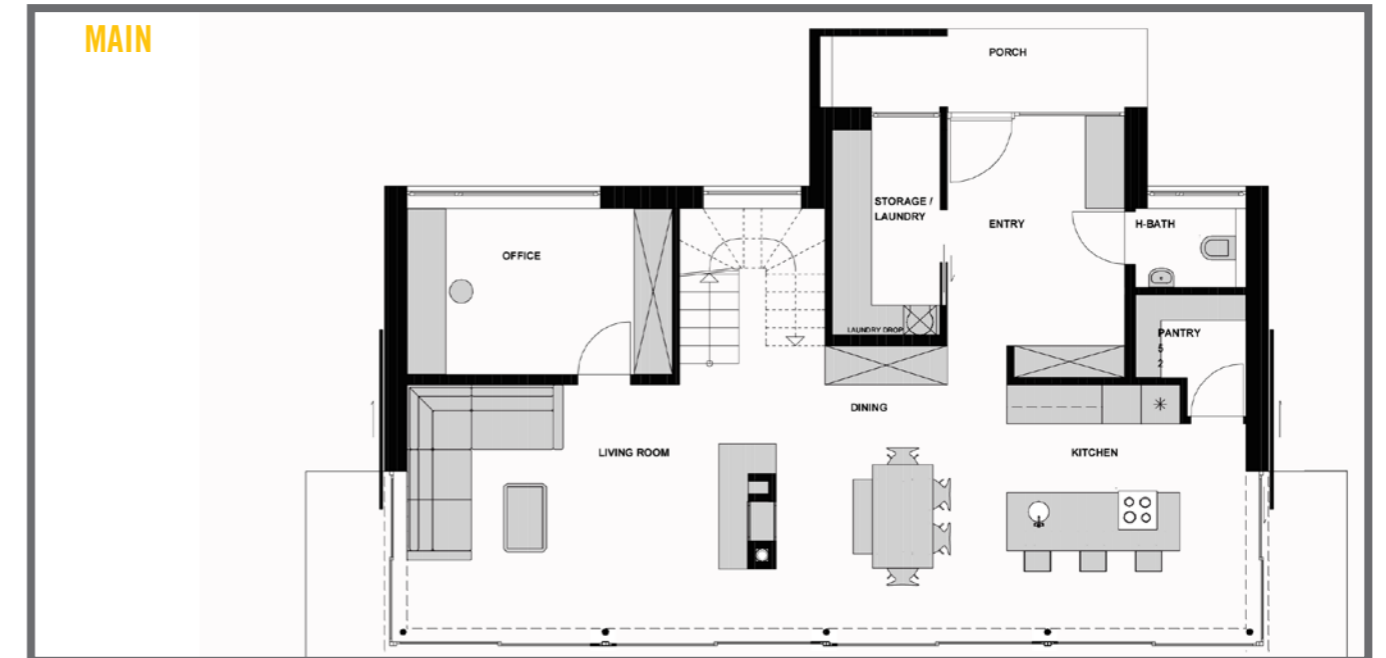
All measurements are approximate only and are subject to change and final design/specifications.

Images shown are examples/artist renderings only. Plans, specifications, materials and features are subject to change without notices. All specifications and features are subject to final written contract.



FLOORS

Our design is based on the principles of Passive House Design, maximizing thermal and environmental benefits by carefully considering the thermal performance of the building components and systems and minimizing heat losses during winter and heat gains during summer. This is being achieved through the buildings orientation using high performance windows & doors, exterior shutters and overhangs, excellent insulation & reduced thermal bridges, superior air-tightness and a ventilation system with high efficient heat recovery.





CONTACT

Marken Projects Inc.
Fab-Homes™

#200-375 Water Street
Vancouver, BC V6B 5C6

O: (1) 778 999 0966
E: info@fab-homes.com
W: www.fab-homes.com

ECO FEATURES FOR YOUR SELECTION

ENERGY



- Superior Insulation
- Passive Design
- Ultra Airtight
- High Performance Windows and Doors
- Minimum Heat Gain in Summer and Heat Loss in Winter
- Exterior Shudders and Overhangs for Daylight Control
- High Albedo coloured roof
- Energy Efficient Appliances / Lighting
- Occupancy Sensors/Dimming Controls
- Prewired for future Renewable Energy
- Energy Monitoring
- and much more...

WATER & SITE



- Low Water Use Fixtures
- Low Water Use Appliances
- Drought Tolerant Plants
- Native Vegetation
- Rainwater Harvesting
- Greywater Recycling
- Smart Irrigation
- Green Roof
- Green Permeable Driveway
- Small Building Footprint
- Minimum Site Disturbance
- and much more...

HEATING & COOLING



- Passive Solar
- Heat recovery Ventilation
- Geothermal Heating & Cooling
- Operable Windows for Natural Ventilation
- Pellet Heating
- Hot Water Solar
- On Demand Hot Water
- Radiant In-Floor Heating
- Prewired for Future Renewable Energy
- Energy Recovery Ventilation
- and much more...

MATERIALS



- Highly Durable Materials
- Use of Recycled and/or Renewable Materials
- Advanced Wood Design & Construction
- FSC Timber
- Low-Voc Materials
- Preferred Locally Sourced and/or Manufactured Materials
- Recycling Stations
- Composting Area
- Advanced Building Systems
- and much more...