

FAB-HOMES™ – VISTA

PASSIVE ECO HOME – EFFICIENT, GREEN AND AFFORDABLE



FAB-HOMES





Entrance View Vista



Garden View Vista



Enjoy your smart green house

FAB-HOMES™ – VISTA

PASSIVE ECO HOME – EFFICIENT, GREEN AND AFFORDABLE

MODEL VISTA – OVERVIEW

The Vista with its simple one level arrangement organizes private spaces like bedrooms around semi-private spaces (office, bathrooms) and the centralized public spaces (Living and dining rooms). It is ideal for those interested in maximizing efficient use of comfortable spaces in a single story house. More over, the Vista features three bedrooms plus flex-room, an open floor layout and extra high ceilings. At your choice, you could add a Green Roof, Renewable Energy sources such as Photovoltaic Panels or Solar Hot Water. For heating and cooling we primarily recommend a highly efficient heat recovery ventilation system and possibly additional components depending on your location and climate.

PACKAGE VISTA

PURCHASE High Quality Construction documents planned along Passive Design principles:

Includes: Plan summary with area calculations, Foundation Plan, Floorplans, Roof plan, Elevations/Sections, Connection details, Window schedule, Building license.

Optional (not included): Custom plan changes, Siteplan with FSR/GFA calculations, Passive House Energy Modelling (PHPP), Multiple building license.

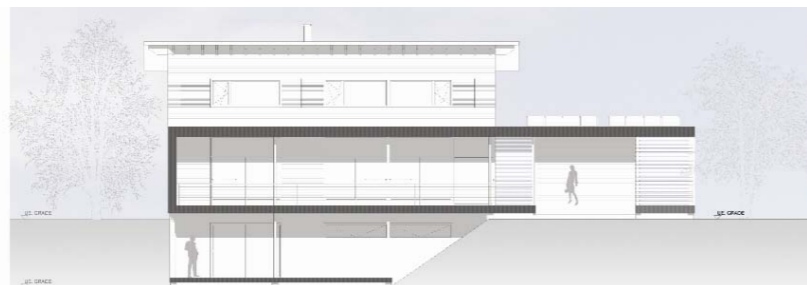
Please contact us for details and pricing: **E-Mail: info@fab-homes.com**

FACTS VISTA

VISTA		
Stories: 1	Square Foot: 1700	Footprint: 33 x 74
Bedrooms: 3+	Bathrooms: 1,5	Carport: No (Extra)
Basement Option: Yes (Extra)		

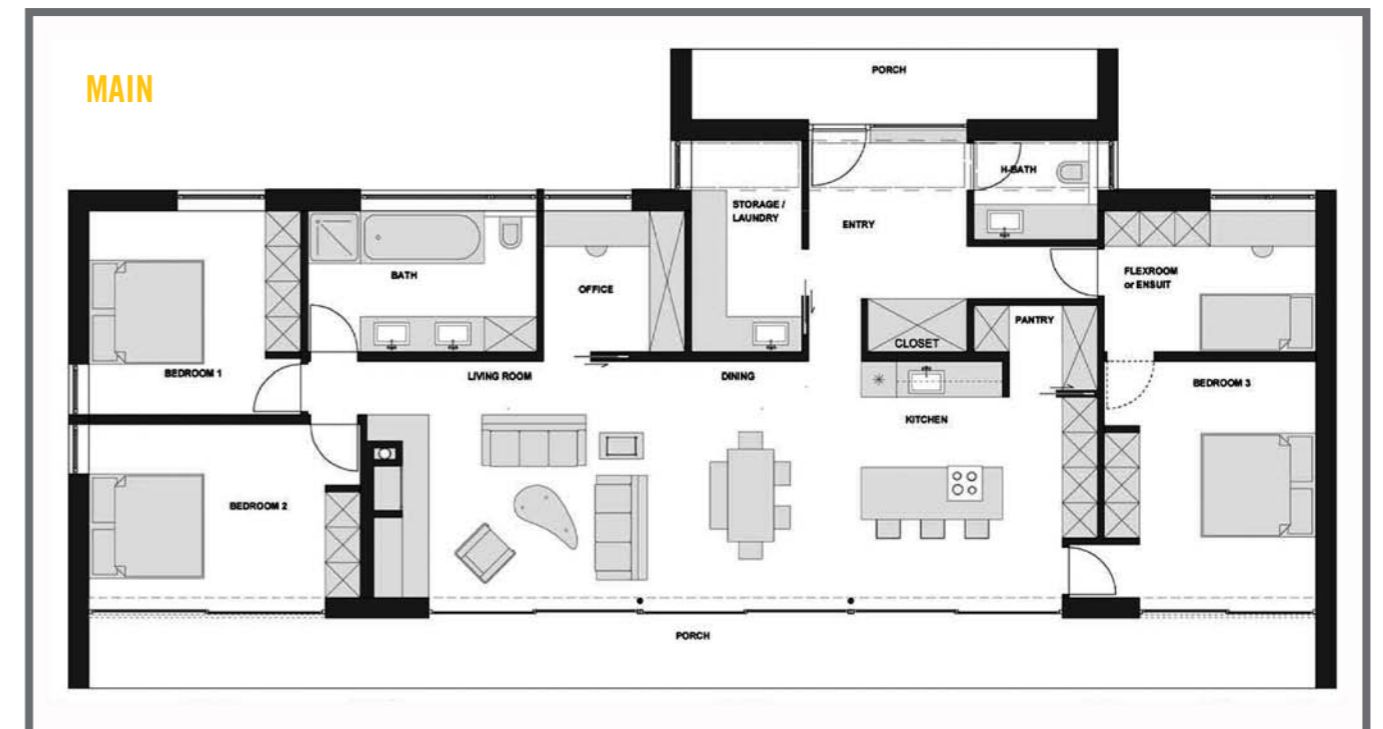
All measurements are approximate only and are subject to change and final design/specifications.

Images shown are examples/artist renderings only. Plans, specifications, materials and features are subject to change without notices. All specifications and features are subject to final written contract.



FLOOR

Our design is based on the principles of Passive House Design, maximizing thermal and environmental benefits by carefully considering the thermal performance of the building components and systems and minimizing heat losses during winter and heat gains during summer. This is being achieved through the buildings orientation using high performance windows & doors, exterior shutters and overhangs, excellent insulation & reduced thermal bridges, superior air-tightness and a ventilation system with high efficient heat recovery.





CONTACT

Marken Projects Inc.
Fab-Homes™

#200-375 Water Street
Vancouver, BC V6B 5C6

O: (1) 778 999 0966
E: info@fab-homes.com
W: www.fab-homes.com

ECO FEATURES FOR YOUR SELECTION

ENERGY



- Superior Insulation
- Passive Design
- Ultra Airtight
- High Performance Windows and Doors
- Minimum Heat Gain in Summer and Heat Loss in Winter
- Exterior Shudders and Overhangs for Daylight Control
- High Albedo coloured roof
- Energy Efficient Appliances / Lighting
- Occupancy Sensors/Dimming Controls
- Prewired for future Renewable Energy
- Energy Monitoring
- and much more...

WATER & SITE



- Low Water Use Fixtures
- Low Water Use Appliances
- Drought Tolerant Plants
- Native Vegetation
- Rainwater Harvesting
- Greywater Recycling
- Smart Irrigation
- Green Roof
- Green Permeable Driveway
- Small Building Footprint
- Minimum Site Disturbance
- and much more...

HEATING & COOLING



- Passive Solar
- Heat recovery Ventilation
- Geothermal Heating & Cooling
- Operable Windows for Natural Ventilation
- Pellet Heating
- Hot Water Solar
- On Demand Hot Water
- Radiant In-Floor Heating
- Prewired for Future Renewable Energy
- Energy Recovery Ventilation
- and much more...

MATERIALS



- Highly Durable Materials
- Use of Recycled and/or Renewable Materials
- Advanced Wood Design & Construction
- FSC Timber
- Low-Voc Materials
- Preferred Locally Sourced and/or Manufactured Materials
- Recycling Stations
- Composting Area
- Advanced Building Systems
- and much more...